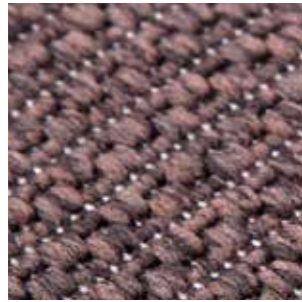
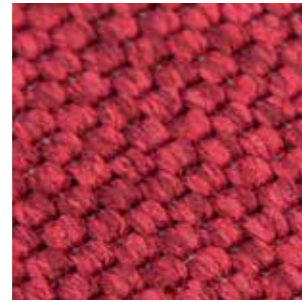


M · I · D · · ·

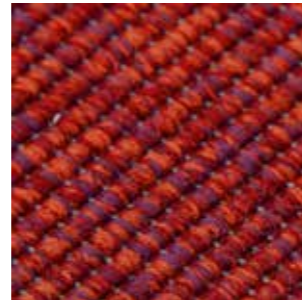
C O N T R A C T   B A S E



HDesign  
27P11



Panama  
21P9



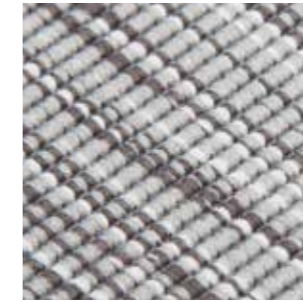
Bouclé  
21P9



Panama  
25P11



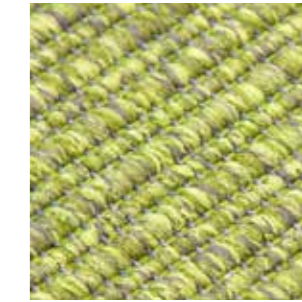
Bouclé  
28P6



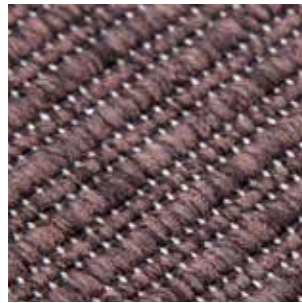
Bouclé Flame  
28P6



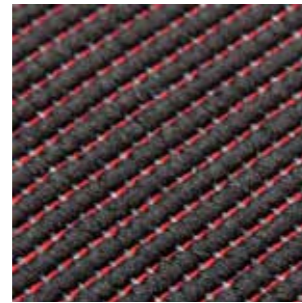
HDesign  
28P6



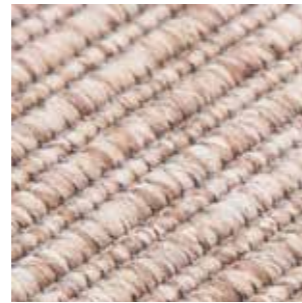
Structure  
25P11



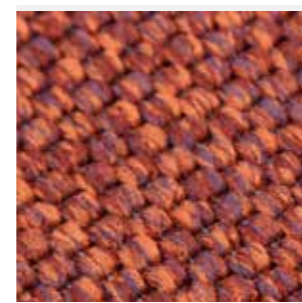
Structure  
27P11



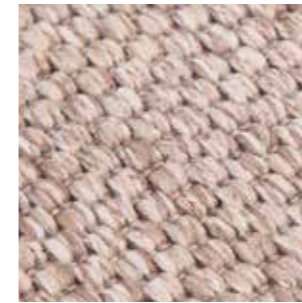
Bouclé 3D  
21P9



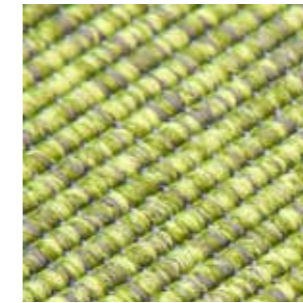
Structure  
28P6



Panama  
20P8



Panama  
28P6



Bouclé  
25P11

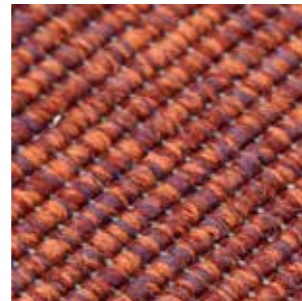


Bouclé  
25P7

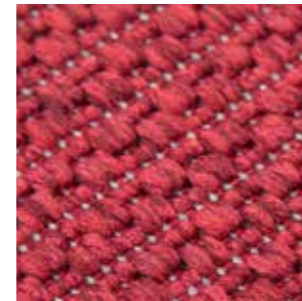
# WOVEN IN HOLLAND



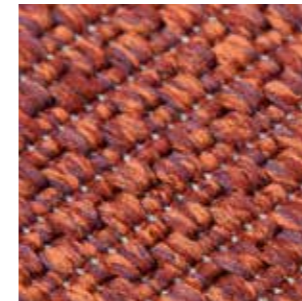
Bouclé Flame  
27P11



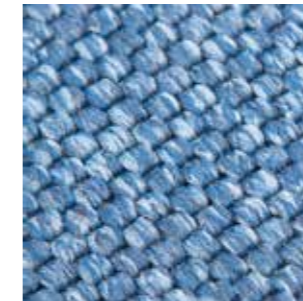
Bouclé  
20P8



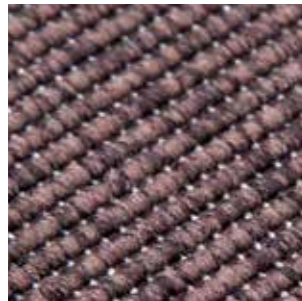
HDesign  
21P9



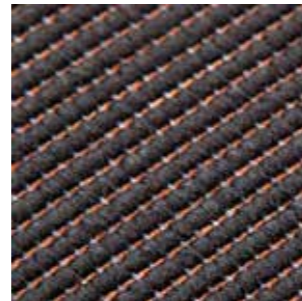
HDesign  
20P8



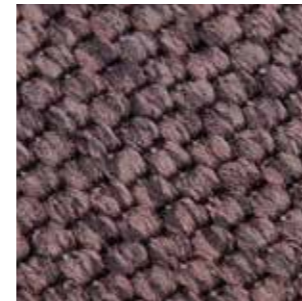
Panama  
25P6



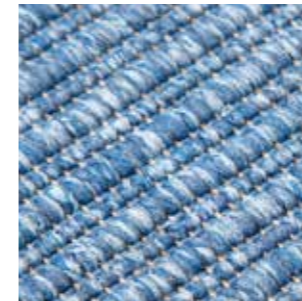
Bouclé  
27P11



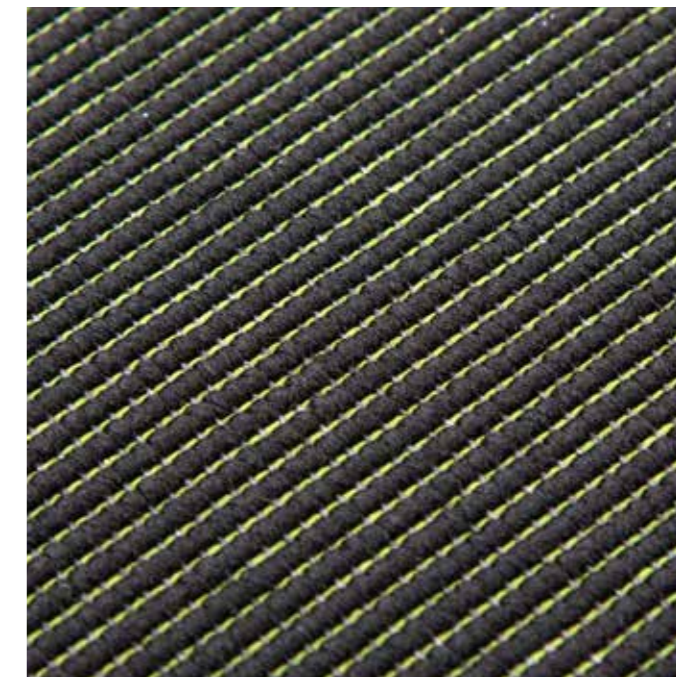
Bouclé 3D  
20P8



Panama  
27P11



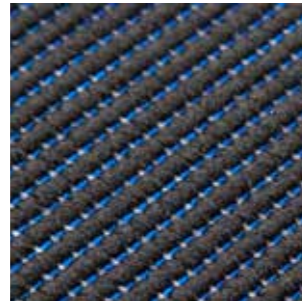
Structure  
25P6



Bouclé 3D  
25P11



Structure  
25P7

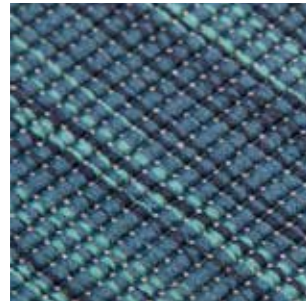


Bouclé 3D  
25P7

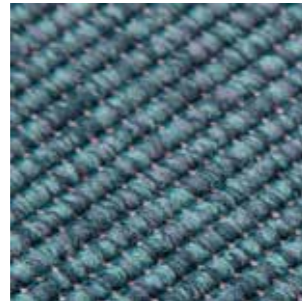
100%  
RECYCLED  
YARNS



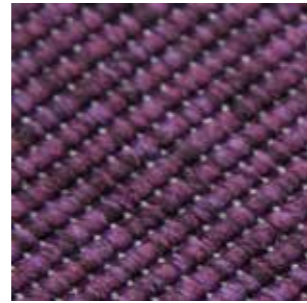
Panama  
24P7



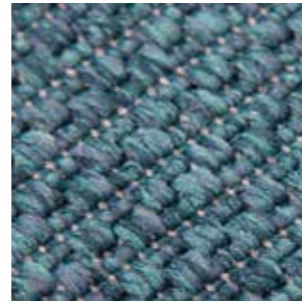
Bouclé Flame  
25P5



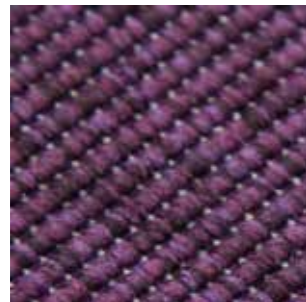
Bouclé  
25P5



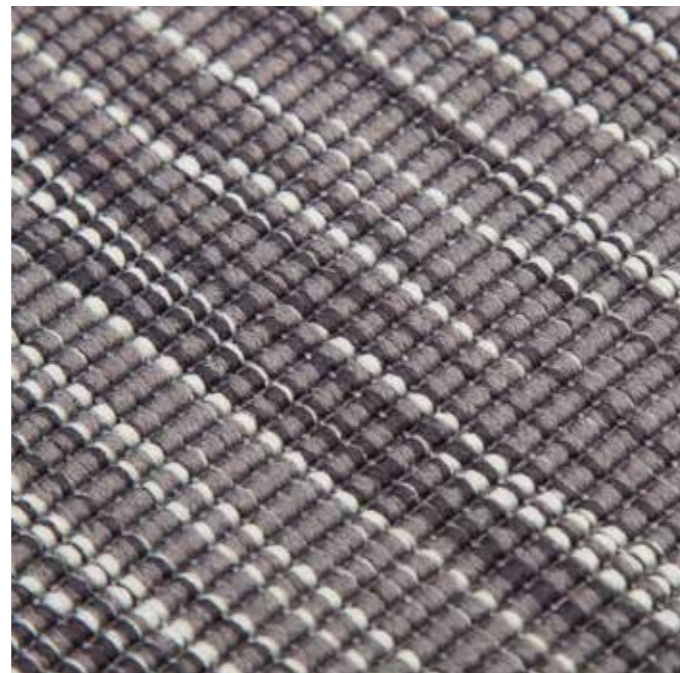
Bouclé  
22P11



HDesign  
25P5



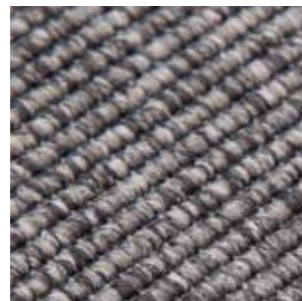
Bouclé  
22P11



Bouclé Flame  
28P5

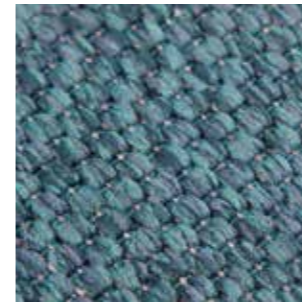


HDesign  
28P5



Bouclé  
28P5

SAMPLES CAN BE REQUESTED AT [WWW.MID.NL](http://WWW.MID.NL)



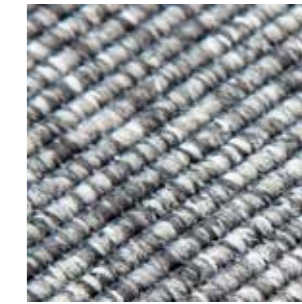
Panama  
25P5



Panama  
28P5

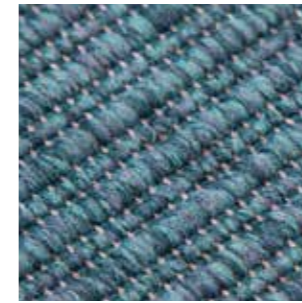


HDesign  
24P7



Bouclé  
24P7

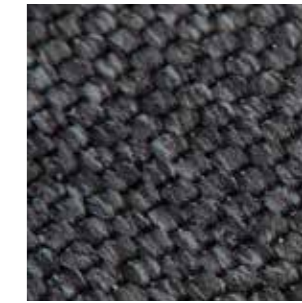
HEAVY  
CONTRACT  
USE



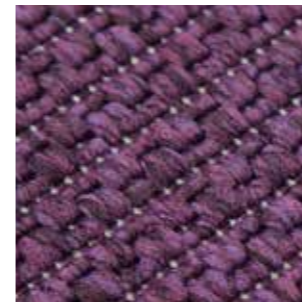
Structure  
25P5



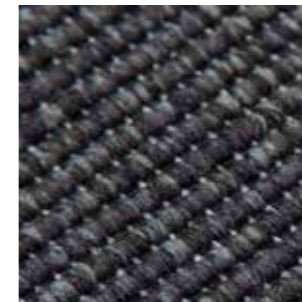
Structure  
24P7



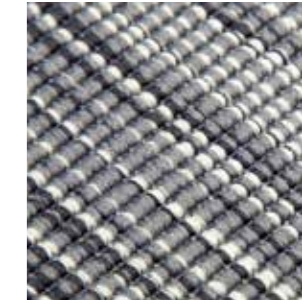
Panama  
28P10



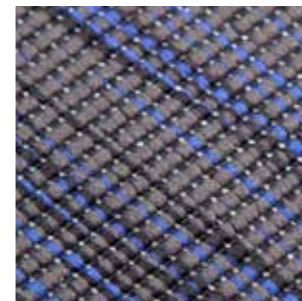
HDesign  
22P11



Bouclé  
28P10



Bouclé Flame  
24P7



Bouclé Flame  
28P10



Bouclé 3D  
28P10
















Structure  
28P10



HDesign  
28P10

SAMPLES CAN BE REQUESTED AT [WWW.MID.NL](http://WWW.MID.NL)

# TECHNICAL SPECIFICATIONS

			Bouclé	Bouclé 3D	Bouclé Flame	Panama	Structure	HDesign
<b>Classification</b>		EN 15114	33, heavy commercial	33, heavy commercial	33, heavy commercial	33, heavy commercial	33, heavy commercial	33, heavy commercial
<b>Weight</b>		ISO 1765	1.443 gr./m <sup>2</sup>	1.443 gr./m <sup>2</sup>	1.443 gr./m <sup>2</sup>	1.473 gr./m <sup>2</sup>	1.240 gr./m <sup>2</sup>	1.407 gr./m <sup>2</sup>
<b>Thickness</b>		ISO 8543	3,5 mm	3,5 mm	3,5 mm	3,5 mm	3,5 mm	3,5 mm
<b>Width</b>			400 cm	400 cm	400 cm	400 cm	400 cm	400 cm
<b>Roll length</b>			30 m	30 m	30 m	30 m	30 m	30 m
<b>Fire rating</b>		EN 13501-1	Bfl-s1	Bfl-s1	Bfl-s1	Bfl-s1	Bfl-s1	Bfl-s1
<b>Stair suitable</b>		EN 1963	continuous use	continuous use	continuous use	continuous use	continuous use	continuous use
<b>Castor chair suitable</b>		EN 985	A, continuous use	A, continuous use	A, continuous use	A, continuous use	A, continuous use	A, continuous use
<b>Thermal resistance</b>		ISO 8302	0.04 m <sup>2</sup> K/W	0.04 m <sup>2</sup> K/W	0.04 m <sup>2</sup> K/W	0.06 m <sup>2</sup> K/W	0.05 m <sup>2</sup> K/W	0.05 m <sup>2</sup> K/W
<b>Static electric charging</b>		ISO 6356	permanent anti-static	permanent anti-static	permanent anti-static	permanent anti-static	permanent anti-static	permanent anti-static
<b>Colour fastness</b>		ISO 105B02	6	6	6	6	6	6
<b>Sound absorption</b>		ISO 354	0,10 aW	0,10 aW	0,10 aW	0,10 aW	0,10 aW	0,10 aW
<b>Impact noise</b>		ISO 717-2	15 dB	15 dB	15 dB	15 dB	15 dB	15 dB
<b>Yarn</b>			Econyl® Polyamide 6	Econyl® Polyamide 6	Econyl® Polyamide 6	Econyl® Polyamide 6	Econyl® 6 Polyamide 6	Econyl® Polyamide 6
<b>Backing</b>			SBR-free latex	SBR-free latex	SBR-free latex	SBR-free latex	SBR-free latex	SBR-free latex
<b>Method of dyeing</b>			piece-dye	piece-dye	piece-dye	piece-dye	piece-dye	piece-dye
<b>Method of production</b>			woven	woven	woven	woven	woven	woven
<b>Country of origin</b>			The Netherlands	The Netherlands	The Netherlands	The Netherlands	The Netherlands	The Netherlands
<b>Certification</b>			ISO 9001 & ISO 14001	ISO 9001 & ISO 14001	ISO 9001 & ISO 14001	ISO 9001 & ISO 14001	ISO 9001 & ISO 14001	ISO 9001 & ISO 14001



M.I.D. Carpets B.V. complies with management system certification according to ISO 9001 and ISO 14001

Contract Base is inspired by true craftsmanship of carpet weaving. Designed for contract use areas and an ideal solution for offices, hotels, shops and other interiors. Offered in a colour selection made by the M.I.D. design team, giving an exciting and dynamic interior design choice.

With modern weaving technology we created a woven flooring that wears like concrete yet still provides the benefits of a textile. High wearing rating class (class 33) and contract fire classification (Bfl). Woven with 100% recycled polyamide yarn and finished with an innovative SBR-free backing. Contract Base is developed for all architects, designers, builders and renovators who are looking for creative, durable and responsible woven floorcovering that helps protect the future of our earth!

Contract Base, a responsible choice for your interior space!

# WHY USE CONTRACT BASE?



**Contract Base** is classified for intensif traffic use in contract areas, such as offices, hotels, shops, etc.



**Contract Base** has the Bfl fire classification, for use in contract areas



**Contract Base** is suitable for continuous use with office chairs



**Contract Base** is suitable for continuous use on stairs



**Contract Base** has anti-static properties



**Contract Base** can be used in combination with underfloor heating systems



**Contract Base** is designed, developed and manufactured in our factory in The Netherlands, certified for ISO 9001 & ISO 14001



**Contract Base** is woven with Econyl®, 100% recycled, polyamide yarn ([www.econyl.com](http://www.econyl.com))



**Contract Base** has an innovative, SBR-free, backing



M.I.D. is member of USGBC and has a strong committed and vested interest in sustainable building according to LEED.

Fitting guidelines, adhesive recommendations and cleaning and maintenance guidelines are available upon request.

# WEAVING OUR FUTURE WITH THE YARN FROM THE PAST

Turn old waste into something brand new and beautiful! M.I.D. proudly uses Econyl® yarn for the Contract Base collection.

Econyl® is all about regeneration. It's about the regeneration of nylon waste into materials for brand new products. It's about the regeneration of our environment. It's about the regeneration for life. Imagine you could turn old waste into something brand new and beautiful. Econyl® does just this!

The innovative Econyl® regeneration system is based on sustainable chemistry. As part of this process the nylon contained in waste such as carpets, clothing or fishing nets is transformed back into virgin raw material - without any loss of quality. As we all know waste is a byproduct of any industrial production. The amount of waste on the globe is reduced by collecting it from landfills and oceans and feeding it back into production cycles. This raw material is now used for our Contract Base collection.

Sustainable textile materials play an important role in green building practices. Econyl® yarns have been included in the list of materials eligible for LEED® points (Leadership in Energy and Environmental Design) as part of the definition of worldwide standards for eco-friendly buildings.



Contract Base is designed for all architects, designers, builders and renovators who are looking for sustainable, durable and beautiful woven floorcovering that helps protect the future of our earth! Contract Base, a responsible choice for your interior space.

Made with 100% Regenerated Nylon

**ECONYL®**

# LESS EMISSIONS | ODOURLESS REDUCED FLAMMABILITY

## SBR-free backing

M.I.D. Carpets is proud to use for Contract Base a new innovative SBR-free backing, the world's first carpet backing containing no styrene-butadiene. Instead, the backing is a compound based completely on vinyl acetate ethylene (VAE). VAE provides a number of advantages to the final product and is the solution for those who are environmentally conscious.

Backing is an essential part of Contract Base and is the final step in creating a woven carpet. The aim of the process is twofold; the latex backing fixates the yarns and improves the lifespan of the carpet.

The advantages of this new backing backing:

- absence of odour: using VAE ensures that the characteristic odour of new carpets now belongs to the past.
- reduced flammability: tests on films of carpet backing compounds with VAE and SBR showed the VAE films to be far less flammable than the SBR films. The new SBR-free backing is therefore ideal in commercial locations such as hotels, offices, shops, etc., where fire safety is a high priority.

- lower emissions of volatile organic compounds: volatile organic compounds (VOCs) are chemicals used to manufacture and maintain building materials, interior furnishing and cleaning and personal care products. These carbon based chemicals evaporate into the air, often in indoor environments. The German Textiles & Flooring Institute GmbH (TFI) tested both VAE and SBR carpet backing for emissions of VOCs. Following the rigorous standards of the GUT label, the emissions of VOCs released by carpets on VAE backing was shown to be much lower than when using an SBR backing.

Contract Base, a responsible choice for your interior space!



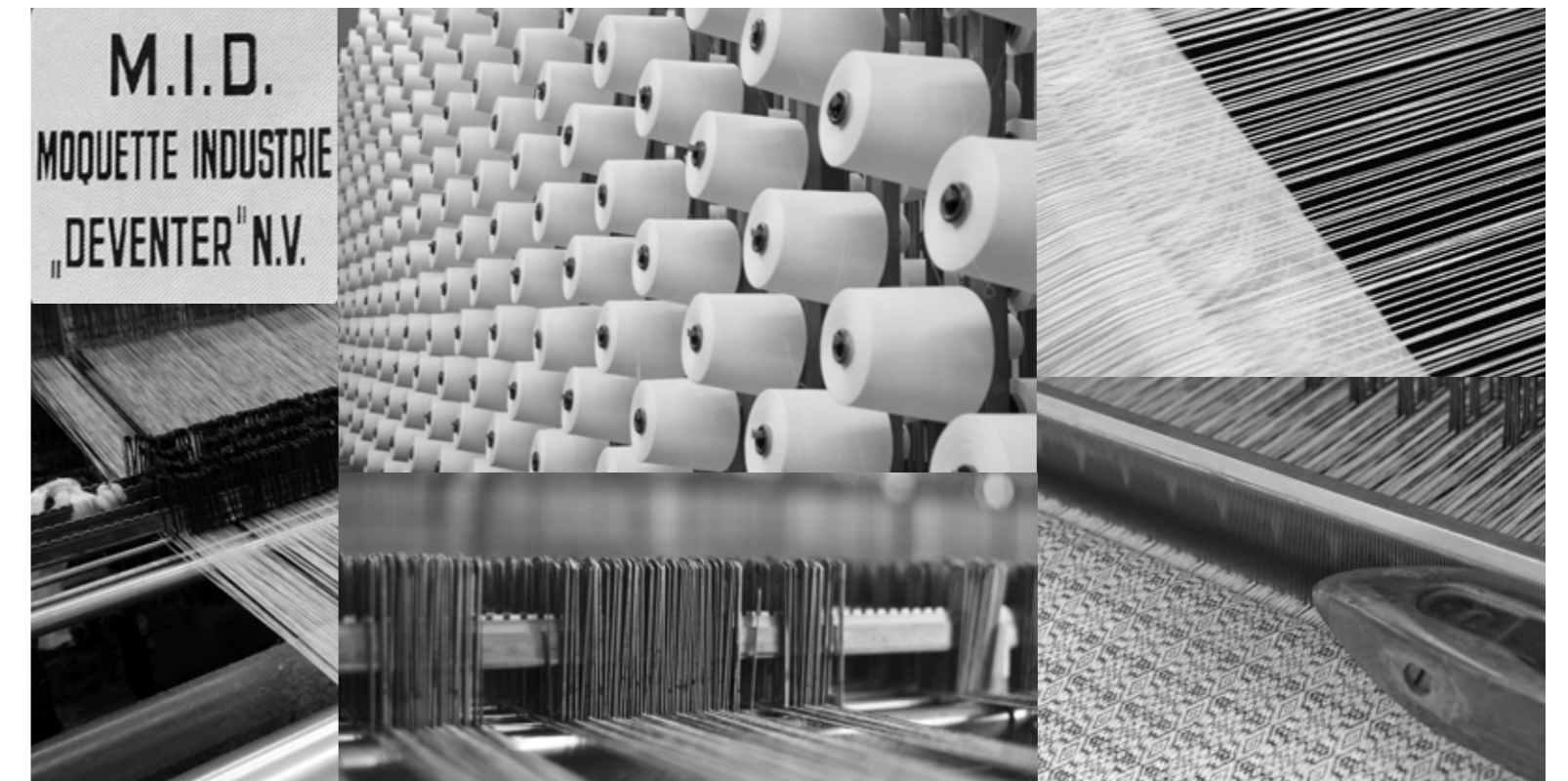


# CRAFTSMANSHIP **SINCE 1932**

M.I.D. Carpets is a design led manufacturer, located in The Netherlands, recognized internationally for creating high quality and beautiful woven carpet. Established in 1932, M.I.D. Carpets has been committed to providing a tailored, individual service, offering quality, flexibility and value for our customers around the globe.

Our care is taking responsibility towards sustainable choices, by using 100% recycled yarns. M.I.D. woven carpet, driven by excellence, creative design and originality in development!

Visit [www.mid.nl](http://www.mid.nl) for more information about M.I.D., our story, our collections and our possibilities





# JOIN THE **COLOURFUL** **WORLD OF M.I.D.!**



M.I.D. Carpets has a history of creating custom colours in its pure beauty. Colours to work with in any interior concept. The Contract Base collection is presented in a distinctive selection of colours, based on interior developments, fashionable interior concepts and the input from leading creative designers.

Custom colours in Contract Base can be supplied, against minimums. Let us know about your colour for your project!

# OUR REFERENCES

M.I.D. Carpets is proud to serve her clients worldwide with beautiful, high quality, woven carpet. We value our customers around the globe and proudly name a few:

## executive offices

abn-amro bank, amsterdam  
deutsche bank, düsseldorf  
deutsche bank, stuttgart  
banque agricol, paris  
national investment company, kuwait  
alliance versicherung, berlin  
lloyds verde, london  
philips, amsterdam  
panasonic, london  
nokia, finland  
shell oil company, rotterdam  
royal dutch mail, amsterdam  
jp morgan, london  
hsbc bank, london  
hsbc bank, düsseldorf  
kpn telecom, groningen  
royal ahold, zaandam  
wehkamp, zwolle  
wedgewood, united kingdom  
mannesmann ag, düsseldorf  
daimler benz, stuttgart  
stock exchange aex, amsterdam  
ernst & young, amsterdam

## government & palaces

former house of parliament, the hague  
dutch embassies, worldwide  
embassy of kuwait, the hague  
royal palace noordeinde, the hague  
japanese embassy, south africa  
palace "eikenhorst", wassenaar  
palace "het loo", apeldoorn  
red runner for royal wedding of prince maurits and princess marilène  
raad van state, the hague  
buckingham palace, "belgium room", london

## celebrities

madonna, popstar  
u2, the edge, guitarist  
jon bon jovi, popstar  
sting, popstar  
marc jacobs, fashion designer  
mr bean (rowan atkinson), actor

## fashion

cartier, boutiques worldwide  
burberry, europe  
ralph lauren, new york  
louis vuitton, london  
frattelli rossetti, italy  
sergio rossi, paris, milano, london  
gucci, london  
armani, london  
chanel, frankfurt  
emilio pucci, new york  
valentino, new york  
rolex, geneve  
debeers jewellery, worldwide  
hacket, london  
maison de bonneterie, amsterdam  
escada, boutiques worldwide

## various

luxury yacht, "princess", donald trump  
luxury yacht, major of the city new york,  
mr. bloomberg  
luxury yacht, "dragonfly"  
luxury sailing yacht "ph3"  
vip area's manchester united stadium  
various rugs for the queen of jordan  
various luxury rooms on the vessel of the holland - america line  
private airplanes, for example for the president of argentina  
supreme court, ottawa, canada  
schiphol airport, various areas  
qatar airways vip lounge, heathrow airport  
royal concert hall, amsterdam  
palace of peace, the hague  
showrooms royal auping beds, europe  
showroom leolux seating, venlo  
showrooms mercedes, europe  
showroom bentley, beijing  
van der valk hotel, suites  
bentley, mulsanne model  
national theatre of bahrain  
l'oreal, paris  
rijksmuseum, amsterdam  
frans hals museum, haarlem



ESCADA



BENTLEY

GUCCI



ROLEX

PHILIPS



Mercedes-Benz

BURBERRY



RALPH LAUREN

CHANEL



kpn

MARC JACOBS

L'ORÉAL PARIS

HSBC

Cartier

**M.I.D. Carpets B.V.**

Industriestraat 15  
8281 BN Genemuiden  
PO-Box 65  
8280 AB Genemuiden  
The Netherlands  
T +31 (0)38 8518700  
F +31 (0)38 3856350  
info@mid.nl  
www.mid.nl